

Installation Instructions for Release 5.0

1. Introduction

This document contains instructions for installing OLAPObjects for TM1, a product for providing secure, direct, live access to your TM1 servers over the web or corporate intranet. It can be used both for reporting and for data collection, and also contains a tool called OLAPObjects Publisher that lets Microsoft Excel be your web page design tool for your OLAPObjects for TM1 web site.

More information on OLAPObjects for TM1 can be found at <http://www.olapobjects.com>.

Table of contents	Page
1. Introduction	1
2. Preparations	1
3. Obtaining the Setup file	1
4. Upgrading OLAPObjects for TM1	1
5. Installing OLAPObjects for TM1	6
6. Running the Sample Application	12
7. Configuring OLAPObjects for TM1 on the web server	12
8. Understanding the Installation Process	14
9. Starting a New Web Application	15
10. Additional Documentation (installed with the software)	16
11. Contact Information	17

2. Preparations

OLAPObjects for TM1 web server

Before installing OLAPObjects for TM1 (OOTM1), a machine with the following configuration must be prepared to host the IIS web server and OOTM1 COM server:

Operating System	Windows 2000 Professional or Advanced Server, Windows XP, or Windows 2003 Server. Windows 2000 Advanced Server or Windows Server 2003 Enterprise Edition is recommended for a production system. Windows NT 4.x is no longer a supported platform for OOTM1, since Microsoft dropped its support.
Web server	Microsoft IIS (Internet Information Services) 5.0 or 6.0. IIS 4.x is no longer supported. The web server can, but is not required to, run on the same physical machine as the TM1 server. The ideal configuration will vary by site.
Applix TM1	The Applix TM1 API files <i>tm1api.dll</i> , <i>tm1sip.dll</i> , and <i>tm1lib.dll</i> (TM1 Version 8.3 and higher) must be present somewhere in the system path. The TM1 version should be 7.1.4 or later, and it is important that it is exactly the same version as the TM1 server that will be connected to. This must be the Wintel version of the API. The TM1 server can be running on any

	platform supported by Applix, including a Windows, UNIX or AIX machine.
Hardware	The optimal hardware for running IIS is recommended. Multiple processors are very advantageous if multiple users will be accessing the OOTM1 web site. If the TM1 server will be running on the same machine (not required) adequate resources must be available for both TM1 and IIS.
Network location	The machine should have a high speed network connection to the TM1 server machine. They should definitely be on the same LAN, and preferably on the same network segment. In some cases it is possible and even advantageous to place both processes on the same physical machine.

OOTM1 5.0 *can* co-exist on the same web server with earlier versions (OOTM1 4.11 or earlier). The recommended way to do this is to begin with the earlier version fully installed on the web server. OOTM1 5.0 can then be added to the configuration by performing some manual steps, and then running the OOTM1 5.0 setup program. Details are given below on page 5.

OLAPObjects for TM1 web client

Any client machine that will be viewing TM1 data published using OLAPObjects Publisher via OOTM1 needs Internet Explorer 5.5 or later. Custom developed web applications can support any browser that the developer wishes to support.

OLAPObjects Publisher design client

Any client machine that will be using Excel as its web page design tool with OLAPObjects Publisher needs to have Excel 2000 or later, and the current Applix TM1 Perspectives or Client add-in. Excel 97 is no longer supported.

3. Obtaining the Setup file

The executable setup file for OOTM1 can be downloaded from a password protected location: <http://www.olapobjects.com/Eval>.

- **On Evaluation:** If you have applied to evaluate the software, the OLAPObjects for TM1 third party software evaluation agreement must be signed and faxed to +1 (203) 563-0770, after which a user ID and password that gives access to the download site will be provided. This is a fully functional version of the software that comes with a 30 day evaluation license, starting at installation.
- **On Purchase:** If you have purchased the software, you will be provided with a user ID and password on receipt of a purchase order. You will also be sent a non-expiring license file. An installed evaluation version of OOTM1 can be converted to a fully licensed version without interruption by simply replacing the evaluation license file that is included with the install package, with this purchased one.

4. Upgrading OLAPObjects for TM1

There are two parts to upgrading an existing OOTM1 application from an earlier version to OOTM1 5.0:

- **Upgrade the software on the web server, and the Excel OLAPObjects Publisher add-in**
- **Upgrade the application on the web site**

This document focuses on the installation and upgrading of the software. For information on upgrading the actual application running on the web site, please refer to the document *OLAPObjectsPublisher-AppUpgrade.doc*.

Furthermore, OOTM1 5.0 *can* co-exist on the same web server as OO 4.11. In the basic software upgrade instructions (given immediately below), we assume that co-existence is not a requirement. Instructions for running OOTM1 5.0 simultaneously with OOTM1 4.11 are given on page 5.

Upgrading from OOTM1 version 4.x:

To upgrade OLAPObjects for TM1 from version 4.x, please take the following steps:

1. Make a backup copy of your license file, OOTM1.lic (which you can reuse, unless it was an evaluation license), or request a new license file from your OLAPObjects for TM1 reseller, or directly from Creeth, Richman & Associates, Inc. (see page 17 for contact information).
2. Make a backup copy of your web site virtual directory, particularly any custom developed web pages.
3. Make a backup copy of all workbooks you may have used to develop web pages using OLAPObjects Publisher.
4. Uninstall your earlier version of OOTM1. You can either do an automatic uninstall using the original setup program, or a manual uninstall. Both methods are described below.
5. Use the OOTM1 5.0 setup program to install the new version, as described below in “Installing OLAPObjects for TM1”.
6. Replace the evaluation license file OOTM1.lic with your backed up copy of OOTM1.lic, or the new OOTM1.lic. This file will be in the OOTM1 folder, usually C:\Program Files\OLAPObjects.NET\bin
7. Upgrade your old OOTM1 web applications by following the instructions in *OLAPObjectsPublisher-AppUpgrade.doc*.
 - a. If your original web application was coded as a custom application, no changes may be needed.
 - b. If your original application was developed using OLAPObjects Publisher from Excel, all workbooks will need to be republished. Hyperlinks and menu HREF attributes will also need to be modified.

Automatic uninstall for version 3.0

Method 1: Uninstall using Add/Remove Programs. Open Add/Remove Programs from the Control Panel.

1. Make a backup copy of your license file, OOITM1.lic (unless it was an evaluation license)
2. Locate OLAPObjects in the list of installed applications.
3. Select Remove to proceed with the uninstallation of OLAPObjects.
4. Confirm that you want to uninstall the system by clicking OK in answer to the question.
5. After the uninstall process is complete, there may be some residual files left in the folder OLAPObjects was installed to (the default was C:\Program Files\OLAPObjects\iTM1). To remove all traces of OLAPObjects for TM1 from the system, which you can do safely after the uninstall process has run, you may need to delete all files under the OLAPObjects folder manually.
6. Reboot your computer.

Method 2: Locate the setup program for the earlier version. For OOITM1 3.0, this file was called *OLAPObjectsSetup.exe*.

1. Make a backup copy of your license file, OOiTM1.lic (unless it was an evaluation license)
2. Double click on the setup program – the same one used to install the software - to start the uninstall process.
3. Select Remove from the InstallShield wizard screen, and click on Next.
4. Confirm that you want to uninstall the system by clicking OK in answer to the question.
5. After the uninstall process is complete, there may be some residual files left in the folder OLAPObjects was installed to (the default was C:\Program Files\OLAPObjects\iTM1). To remove all trace of OLAPObjects for TM1 from the system, which you can do safely after the uninstall process has run, you may need to delete all files under the OLAPObjects folder manually.
6. Reboot your computer.

NOTE: If either of the automatic uninstall methods fails, you will need to perform a manual uninstall. Proceed to the Manual uninstall instructions below.

Automatic uninstall for version 4.x

Method 1: Uninstall using Add/Remove Programs. Open Add/Remove Programs from the Control Panel.

1. Make a backup copy of your license file, OOTM1.lic (unless it was an evaluation license)
2. Locate OLAPObjects in the list of installed applications.
3. Select Remove to proceed with the un-installation of OLAPObjects.
4. Confirm that you want to uninstall the system by clicking OK in answer to the question.
5. After the uninstall process is complete, there may be some residual files left in the folder OLAPObjects was installed to (the default was C:\Program Files\OLAPObjects\TM1). To remove all traces of OLAPObjects for TM1 from the system, which you can do safely after the uninstall process has run, you may need to delete all files under the OLAPObjects folder manually.
6. Reboot your computer.

Method 2: Uninstall using the original Setup program. Locate the setup program for version 4.x. This file was called *OLAPObjectsSetup4.exe*.

7. Make a backup copy of your license file, OOTM1.lic (unless it was an evaluation license)
8. Double click on the setup program – the same one used to install the software - to start the uninstall process.
9. Select Remove from the InstallShield wizard screen, and click on Next.
10. Confirm that you want to uninstall the system by clicking OK in answer to the question.
11. After the uninstall process is complete, there may be some residual files left in the folder OLAPObjects was installed to (the default was C:\Program Files\OLAPObjects\TM1). To remove all traces of OLAPObjects for TM1 from the system, which you can do safely after the uninstall process has run, you may need to delete all files under the OLAPObjects folder manually.
12. Reboot your computer.

NOTE: If either of the automatic uninstall methods fails, you will need to perform a manual uninstall. Proceed to the Manual uninstall instructions below.

Manual uninstall for version 3.0 and earlier

Perform a manual uninstall if you cannot locate the setup program for the earlier version. The critical, must-do part of the uninstall process is the removal of the three COM objects from the registry:

1. Go to a DOS prompt.
2. Make the OOTM1 folder, which was usually at C:\Program Files\OLAPObjects\iTM1, your current folder.
3. At the DOS prompt, type **regsvr32 /u OOLic.dll**, and press the Enter key
4. At the DOS prompt, type **regsvr32 /u OOPublisher.dll**, and press the Enter key
5. At the DOS prompt, type **regsvr32 /u OOiTM1.dll**, and press the Enter key
6. After each of these commands, the system should inform you that the file in question has been unregistered.
7. Reboot your computer.

To do a complete uninstall, remove all files and folders in your OOTM1 folder, and the folder itself (usually C:\Program Files\OLAPObjects\iTM1). Note that the default destination for OOTM1 5.0 is different from earlier versions: C:\Program Files\OLAPObjects.NET\.

Refer to the section below called “Understanding the Installation process” for information on what the installed components of OOTM1 are.

Manual uninstall for version 4.x

Perform a manual uninstall if you cannot locate the setup program for version 4.x. The critical, must-do part of the uninstall process is the removal of the three COM objects from the registry:

1. Go to a DOS prompt.
2. Make the OOTM1 folder, which was usually at C:\Program Files\OLAPObjects\TM1, your current folder.
3. At the DOS prompt, type **regsvr32 /u OOLic.dll**, and press the Enter key
4. At the DOS prompt, type **regsvr32 /u OOPublisher.dll**, and press the Enter key
5. At the DOS prompt, type **regsvr32 /u OOTM1.dll**, and press the Enter key
6. After each of these commands, the system should inform you that the file in question has been unregistered.
7. Reboot your computer.

To do a complete uninstall, remove all files and folders in your OOTM1 folder, and the folder itself (usually C:\Program Files\OLAPObjects\TM1).

Refer to the section below called “Understanding the Installation process” for information on what the installed components of OOTM1 are.

Running OOTM1 5.0 at the same time as OO 4.11

The only registered files that OLAPObjects 5.0 and earlier OLAPObjects versions have in common are OOTM1.dll and OOLic.dll. These core files have changed little from version to version, and should generally be backward and forward compatible.

Note that compatibility of OOTM1.dll is presently actively supported **only** between OLAPObjects 5.0 and OLAPObjects 4.11.

The recommended steps for configuring simultaneous installations of OLAPObjects 5.0 and an earlier OLAPObjects version are as follows:

1. Before you start - we assume that v4.11 is up and running happily, and you have not run the OLAPObjects 5.0 install.
2. Reboot your computer.
3. Manually unregister the v4.11 OOTM1.dll and OOLic.dll, both located by default in the C:\Program files\OLAPObjects\TM1 folder.

These are the only two registered files that OO 4.11 and OO 5.0 have in common.

From the command prompt in the folder that houses them, the commands to unregister these files are:

```
regsvr32 /u OOTM1.dll
```

```
regsvr32 /u OOLIC.dll
```

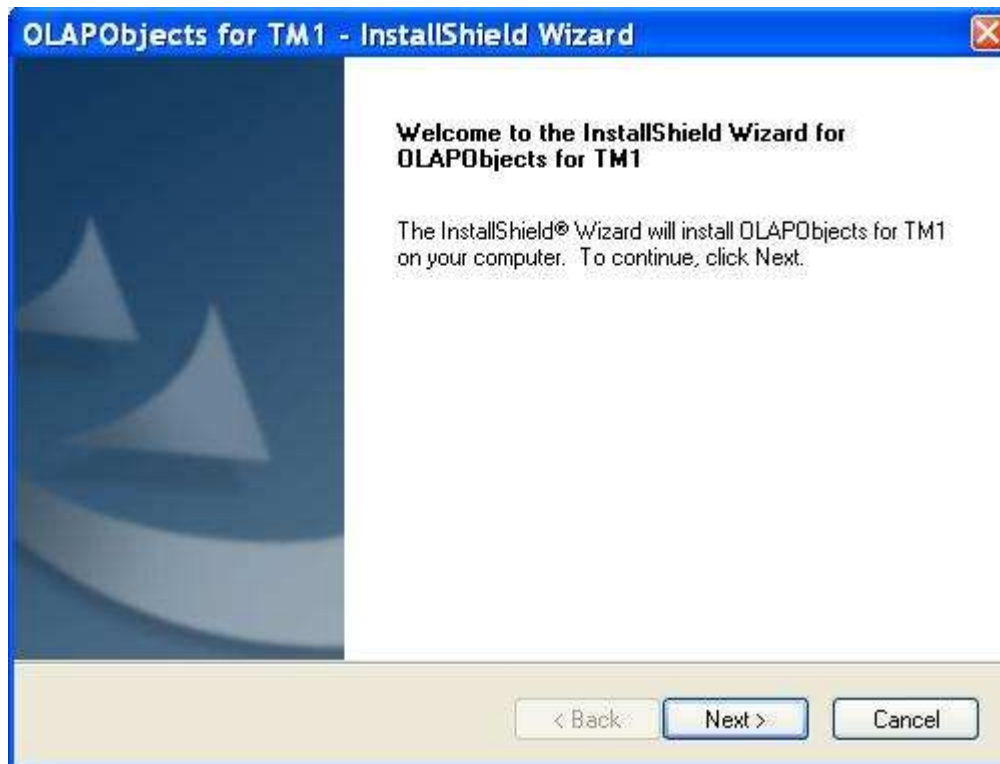
4. Back up and then delete the OOTM1.lic file from the same folder
5. Run the OLAPObjects 5.0 setup package
6. By default this will install newer copies of these files to C:\Program Files\OLAPObjects.NET\bin and register them (along with some other stuff), together with an evaluation OOTM1.lic file.
7. Replace the evaluation OOTM1.lic file (in the new v5.0 bin folder) with the backed up non-expiring one.

Try out your old v4.11 web site to make sure everything is working as expected.

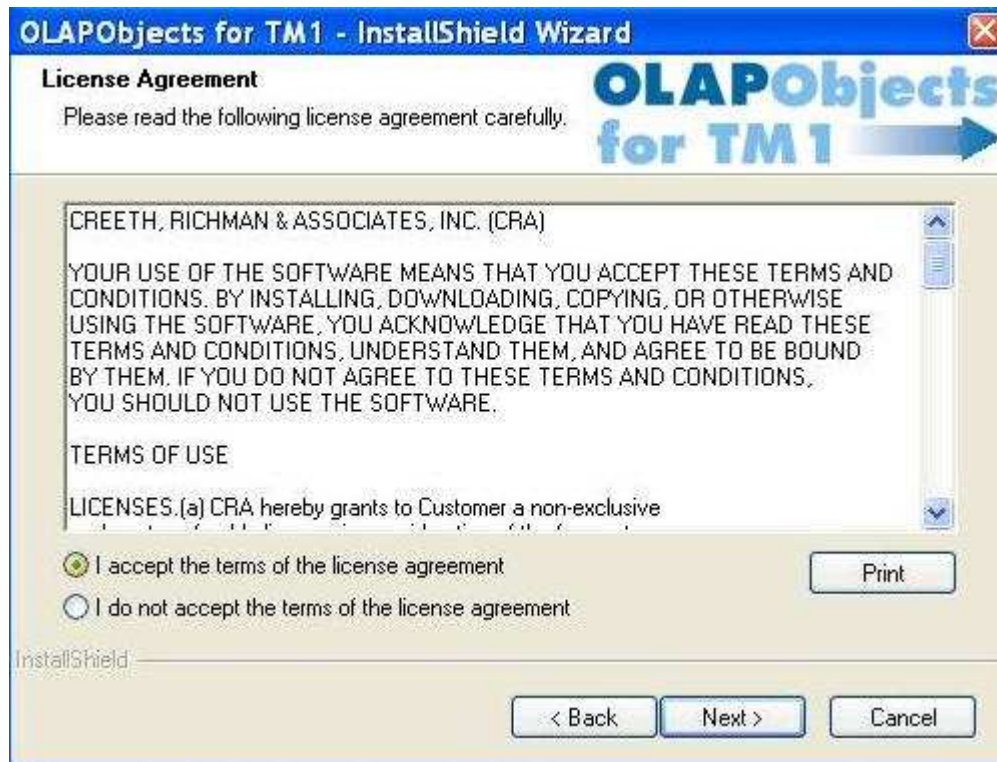
5. Installing OLAPObjects for TM1

The OOTM1 software must be installed on the IIS web server machine described in the Preparations section above:

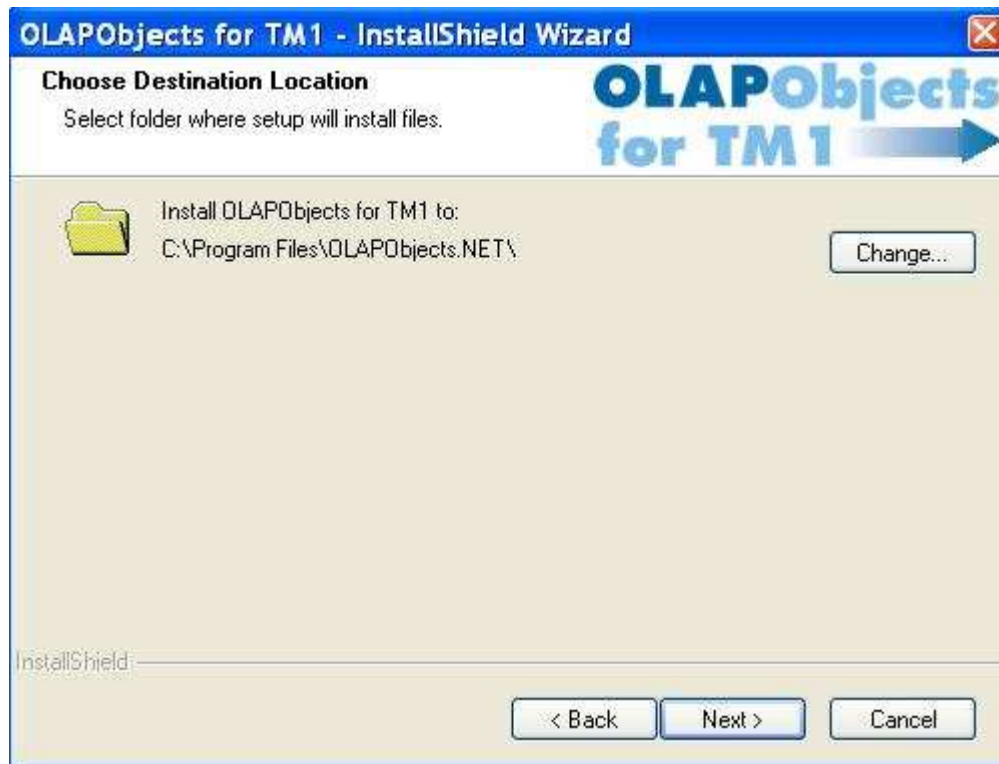
1. On this machine go to the Windows explorer and double click on the downloaded file (currently OLAPObjectsSetup50.exe) to start the install.
2. After messages about extracting files, the InstallShield welcome screen will be displayed. Click on Next.



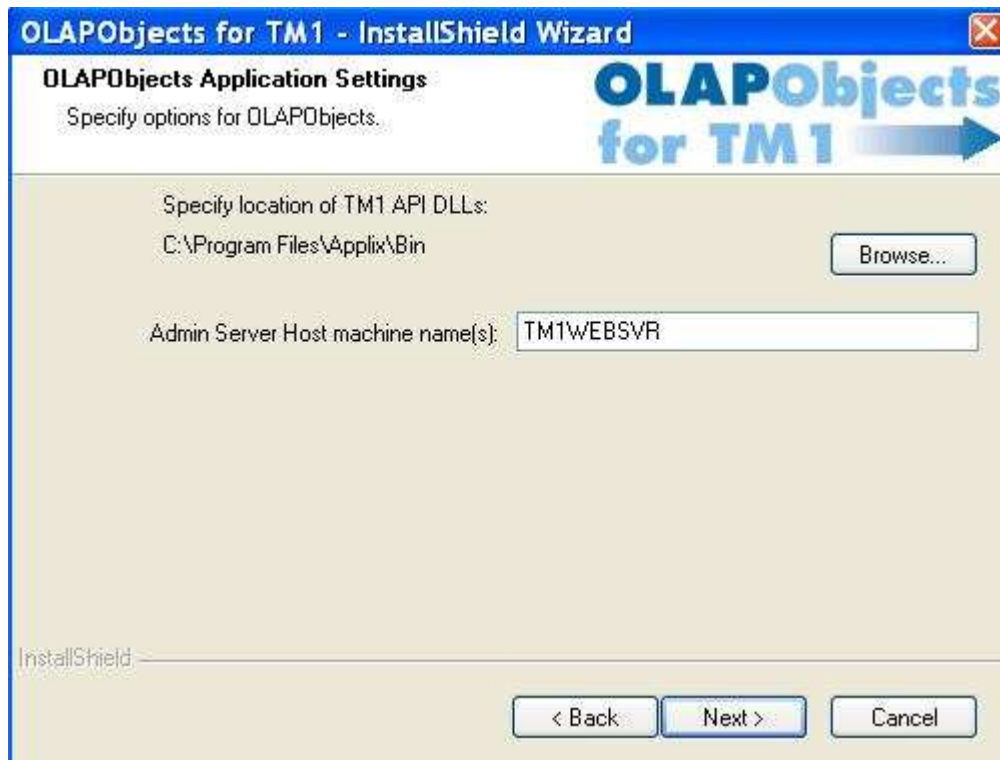
3. The license agreement screen is displayed. Read it, and if the terms are acceptable, click on Yes.



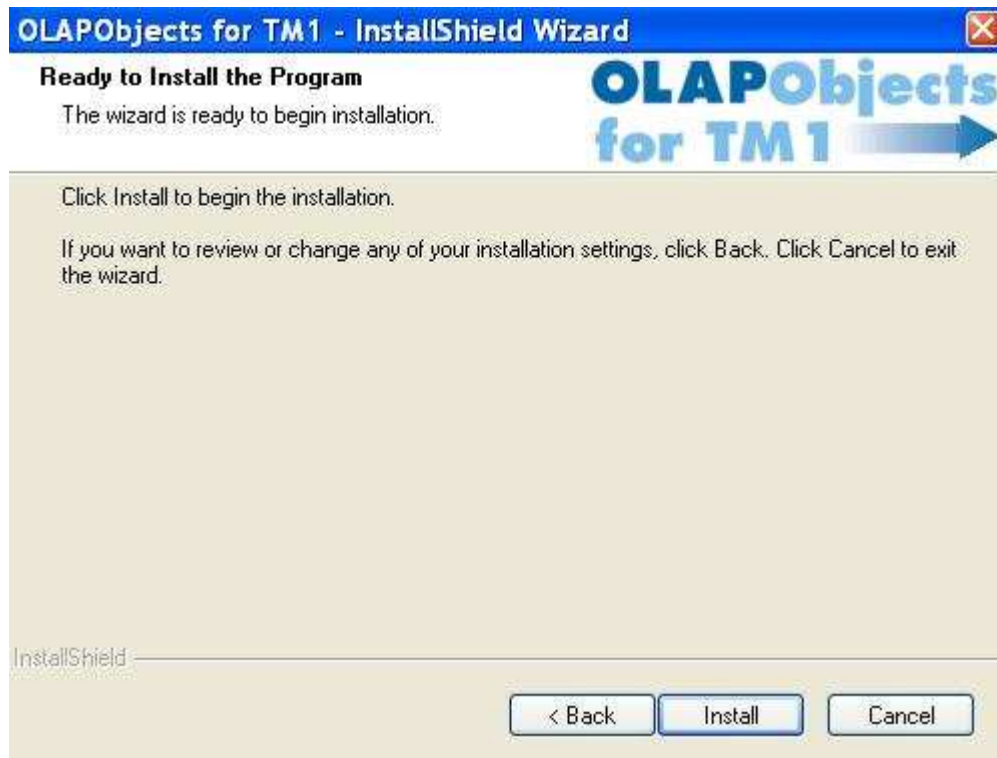
4. Specify the destination location. The default location offered is C:\Program Files\OLAPObjects.NET\, but you are free to select another location on this machine. Click on Next.



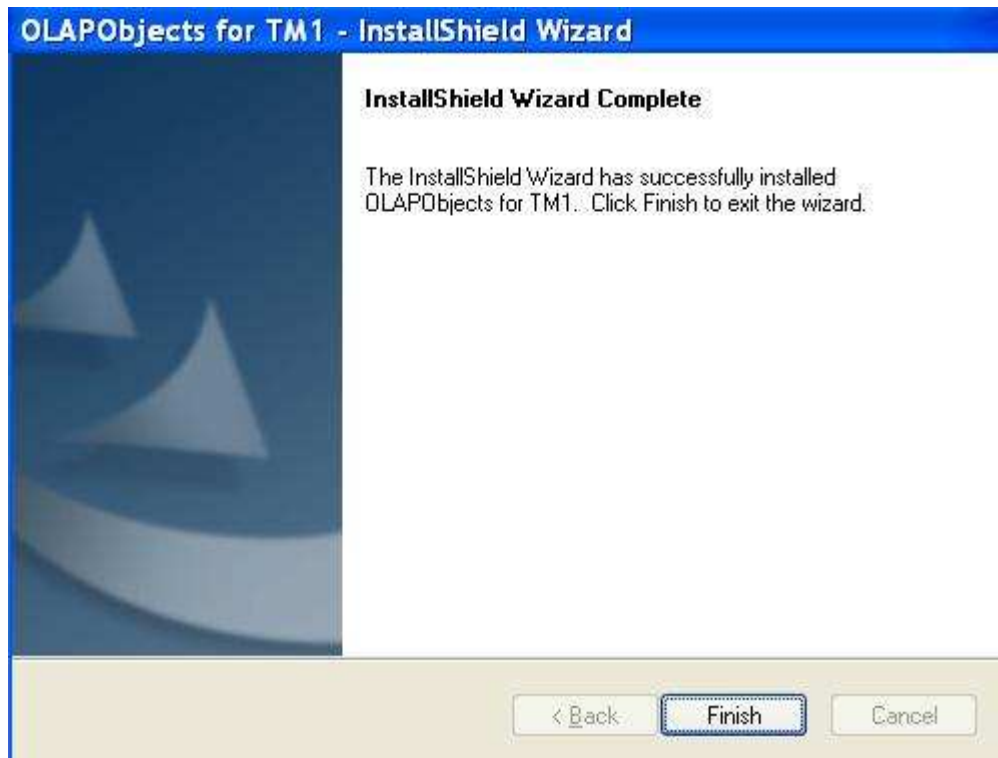
5. The next screen displays settings that are used by the OLAPObjects for TM1 application. You can click the Browse... button to specify the location of the Applix TM1 API files. You can also specify the name (or IP address) of your TM1 admin server. Even if the admin server is not running at the time of the installation, you can enter a value. You can also leave it blank and configure the value later. You can specify more than one TM1 admin server by using a semicolon (;) as a separator. Click on Next.



6. You will finally be prompted to begin the installation. Click either Install to install the program, Back to go back and modify settings, or Cancel to exit the OLAPObjects for TM1 installation.



7. On the final screen, you may be prompted to reboot the machine. Click on Finish to complete the installation.



If your platform is Windows 2003, to complete the installation you may need to manually set folder and file permissions for the NETWORK_SERVICE user, as described on page 15.

6. Running the Sample Application

Suppose OLAPObjects for TM1 has been installed on a computer named WEBSERVER. The installation routine created an IIS virtual directory called OOTM1Web on that machine, linked to the Sample Application folder. Suppose also that a TM1 server is running and registered with the TM1 admin server that was specified during the installation process.

Then, the sample application can be launched as follows:

1. Open Internet Explorer
2. Got to the URL: http://WEBSERVER/OOTM1Web/OO_Admin.aspx

You will be prompted to log on. Select an available TM1 server and then log on as a TM1 admin user. You will then be redirected to a page for administering TM1 client and group security.

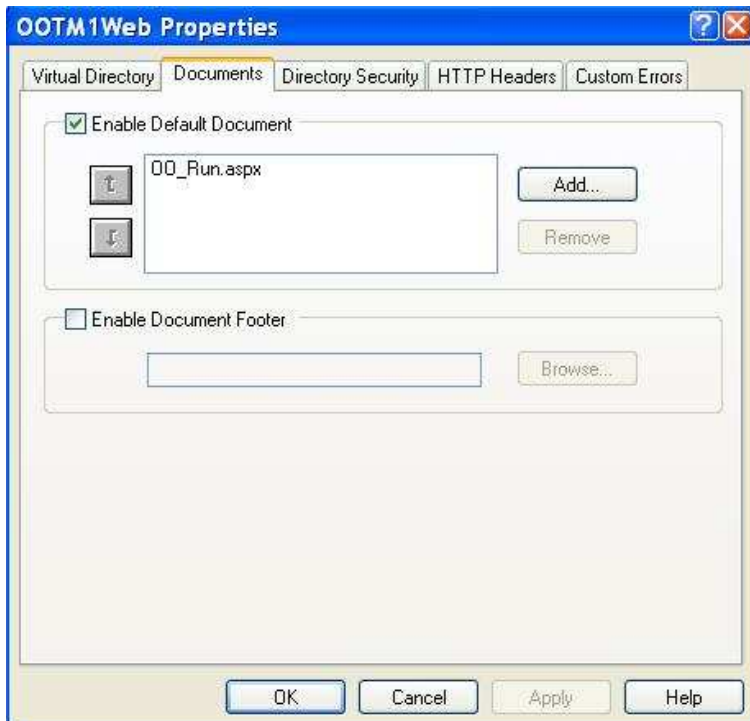
7. Configuring OLAPObjects for TM1 on the web server

Once you know that the sample application is running, and enables you to connect to a real TM1 server, you can further configure the application.

Set a default web page

The default web page is the web page that your users will be redirected to if they go directly to the virtual directory without specifying a default destination. For example, if they just enter the URL: <http://WEBSERVER/OOTM1Web>.

To set the default page for the virtual directory, go into the Internet Information Services manager (from Administrative Tools under the Control Panel), and right-click on the virtual directory you are publishing web pages to. Select Properties from the menu, and edit the Documents tab as follows:



To add a different default page, click the Add... button. Use the up and down arrow buttons to adjust the precedence of pages (i.e. if the first page on the list is not found, IIS will try the second, and so on).

It is **highly recommended** that a default web page be configured for your site.

Set a logout redirect page

A “logout redirect page” can be set by going to [OO_Settings.aspx](#) and modifying the “logout redirect page” setting. For example:

http://WEBSERVER/OOTM1Web/oo_settings.aspx

Setting the “logout redirect page” is optional. If it is set, on logging out via [OO_logout.aspx](#), users will be sent directly to the “logout redirect page”. If TM1 integrated logon is **not** configured and the “logout redirect page” is a page that requires a TM1 logon, this will bring them to the logon page first.

WARNING: If TM1 integrated logon is configured, and the logout redirect page is set to a page that requires a TM1 logon, users will be automatically logged on immediately as soon as they log out. It is therefore recommended that if integrated logon is configured, the “logout redirect page” setting should either be blank, or point at a non-OLAPObjects web page.

If nothing is specified for the “logout redirect page”, the users will see a page confirming that they have logged out, with a link that will bring them back to the logon page.

Set the admin server

If you did not specify a TM1 admin server during the setup process, or if you wish to change it, you can do so by going to the oo_Settings.aspx page. For example:

```
http://WEBSERVER/OOTM1Web/oo_settings.aspx
```

Alternatively you can edit the web.config file in the root folder of your virtual directory, using Notepad or another text editor. The line you will edit is the following:

```
<add key="OO_AdminServer" value="TM1SERVER" />
```

8. Understanding the Installation Process

There are two components of OOTM1 that are installed as part of this process:

- The OOTM1 server - provides a communication link between the web server (IIS) and the TM1 server (via the TM1 API)
- OLAPObjects Publisher – an Excel add-in that lets you use Excel as your web page design tool.

The following changes are made to your system by the OOTM1 install routine:

- Files are copied to the folder where OOTM1 was installed (specified in step 4 of the installation instructions). The default is c:\Program Files\OLAPObjects.NET\ . The following sub-folders are created:

OOTM1 5.0	Comments
C:\Program Files\OLAPObjects.NET	
Bin	Contains core DLL files: OOTM1.dll, OOLIC.dll and OOPublisher.dll
Addin	OLAPObjects Publisher add-in file
Documentation	Online help for OOTM1 (not Publisher), Getting Started and Installation guide PDFs.
Sample Application	Sample application. Setup creates an IIS virtual directory to this folder. If creating a new web application, this folder can be copied as an initial template. OO 5.0: Standard web pages are organized into subdirectories. OO 5.0: Contains the Web.config file which points at the TM1 admin server (and other parameters)
Images	Location of graphical files
Bin	OO 5.0: Location of runtime DLL files
Reports	OO 5.0: Example of a destination folder for published web pages. It is now easy to separate out web pages into multiple folders in a single application.

Scripts	OO 5.0: Javascript files
Styles	OO 5.0: Style sheets
Standard Web Pages	OO 5.0: If creating a new web application, a copy of these files and directory structure can be the starting point.

- The following DLL (dynamic linked library) files are registered on the system. The files are located in the bin sub-folder.

1. OOTM1.dll
2. OOLic.dll

The README.TXT file contains more information on registering and unregistering DLL files.

- The system PATH is updated to include the path to the TM1 API files.
- The OOTM1 install program will attempt to grant file write access on the computer running IIS to a few files that it installs, to the following IIS system user accounts:

1. the Internet Guest Account
2. the Launch IIS Process Account
3. the ASP.NET machine account

The default names for these accounts are IUSR_<computername>, IWAM_<computername> and ASPNET (or NETWORK_SERVICE on Windows 2003) respectively. The files that these accounts need at least write access to are:

File	IUSR_<.>	IWAM_<.>	ASPNET / NETWORK_SERVICE
<InstallDir>\bin\OOTM1.lic	✓	✓	✓
<InstallDir>\bin\OOTM1.log	✓	✓	✓
<Windows>\system32\prefmd.ini	✓	✓	✓
<InstallDir>\Sample Application	✓		✓

If a new virtual directory is set up, set up the permissions as for the Sample Application.

- If you provided the installation routine with a TM1 admin server name, the file Web.Config under the Sample Application folder will be updated with the admin server name. For example, if your TM1 admin server runs on a machine named "MyServer", the Web.Config file will contain the text `<add key="OO_AdminServer" value="MyServer" />`
- If your system does not already have it, Microsoft .NET Framework Version 1.1 will be installed.
- If your system does not already have it, Microsoft Visual Basic 6 Runtime will be installed.
- The first time OOTM1 is run, a file called prefmd.ini will be created in the \WINNT\SYSTEM32 folder.

9. Starting a New Web Application

After installing OOTM1 5.0, to create a new web application from scratch, do the following:

1. Create a new folder to house the new application
2. Create an IIS web server virtual directory, pointed at the folder. This will be the root of the virtual directory.

3. Copy all the standard web pages and folders from the Sample Application folder (which is created as part of the installation process) to the new folder. The standard web pages include everything required by web pages created using OLAPObjects Publisher, as well as custom coded web pages. Specifically:
 - All the files in the root of the Sample Application folder (e.g. OO_*.aspx, web.config, etc.)
 - The entire contents of the Sample Application\Bin folder
 - The entire contents of the Sample Application\Images folder
 - The entire contents of the Sample Application\Scripts folder
 - The entire contents of the Sample Application\Styles folder
 - Recommended: create one or more empty folders under Sample Applications (e.g. Reports) to publish your web pages to.
4. Edit the Web.Config file so that it contains the name of the TM1 admin server you will be using, as described in the previous section.
5. Set a default web page as described on page 12.

This new folder is now ready to be the base for further web development, either using OLAPObjects Publisher from Excel, or by writing customized code. Please refer to the additional documentation section for links to information on how to proceed from this point.

10. Additional Documentation (installed with the software)

- **README.TXT** – post-installation instructions, troubleshooting tips and release notes for OOTM1.
- **OOTM1.chm** – This is a Web Developer's reference manual that documents the object hierarchy implemented by OLAPObjects for TM1 together with code samples and explanations.
- **OOPublisher.chm** – the on-line help file for OLAPObjects Publisher. Includes usage instructions, examples, and information on supported functionality.
- **OLAPObjects Publisher Release Notes 5-0.pdf** – release notes for the current version of OLAPObjects Publisher.
- **OLAPObjectsPublisher-AppUpgrade.pdf** – Web application upgrade instructions.
- **OLAPObjectsPublisher-GettingStarted.pdf** – contains instructions for how to start designing web pages in Excel using OLAPObjects Publisher (this file is distributed with the install package, not installed with the software).

11. Contact Information

For Technical Support please contact your OLAPObjects for TM1 reseller partner, or:

Phone : +1 (203) 563-0760	E-mail: support@OLAPObjects.com
---------------------------	--

If you have purchased this product, on-line technical support, discussion groups, and downloads are available at <http://www.OLAPObjects.com>. Click on "Log In" to apply for a free user ID and password.



530 DANBURY ROAD
WILTON, CT 06897, USA
PHONE: +1 (203) 563-0760
URL : [HTTP://WWW.CREETHRICHMAN.COM](http://www.creethrichman.com)